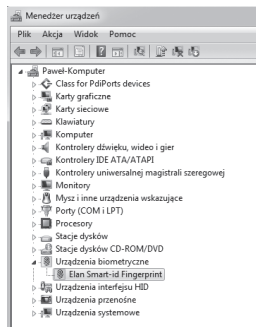


E-NIGMA USB Fingerprint Scanner is especially designed for users who want replace all passwords with one biometric security device. For example, it can log into your computer, shopping web pages and social network web pages. You can use E-NIGMA to encrypt and decrypt the files through the fingerprint recognition, which makes it the most easy and fast security scanner. Scanner is very fast, it only takes 0.05s to recognize your identification.

E-NIGMA is easy and convenient to use. You will only need to insert the dongle into the device's USB port, and your computer will automatically install drivers. Then all you need is to follow the steps which show on the screen. Device is supported by Windows 10 Hello, and it backward compatible with Win8.1/Win7. The advanced technique can prevent the forged fingerprint, which gives you more protection and security. Other than 360° non-directional finger access, it can also set up to 10 fingerprints, which gives your whole family a perfect and private space, and thus it upgrades your computer into a highly secure computer.



How to install dongle

For Windows 7 install driver, you can download from website <http://download.media-tech.eu>

For Windows 8.1 and Windows 10 you only to insert dongle into USB port – windows will install system built-in driver.

How to install Smart ID software

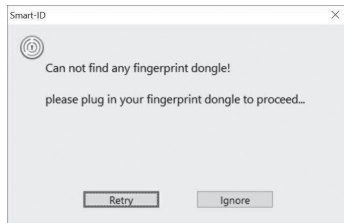
Please download SmartIDInstaller software from <http://download.media-tech.eu>
Remember to deactivate antivirus and firewall software before running installation.



Follow the process of the installation step by step.



If you did not plug in the dongle, the following message will pop up. However, you can choose "Ignore" to proceed.



After installation, the Smart-ID program will be launched. Also, you can find the program link on desktop.



You can also find the program in the shortcut area after the program executed.

If you have Chrome installed, the following Smart-IDWebAutoLogin program should be installing.



Please install and enable the add on program.



Smart-ID WebAutoLogin 1.5

Smart-ID AutoLoginApp

詳細資訊

ID: hjjngolnpaiekemddabgdaobickpknco

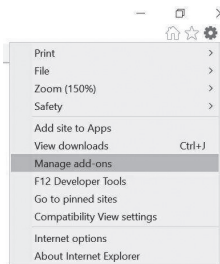
查看檢視模式: 背景頁面

☐ 允許在無痕模式中執行

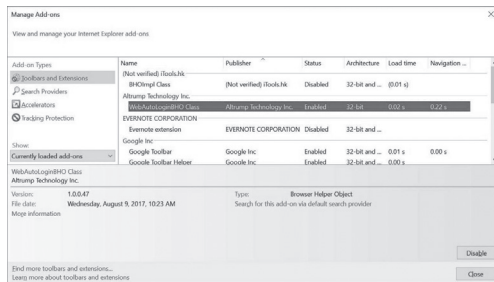
Attention: when the IE browser launched first time after installation, the following message will pop up. Please choose “enable”.



Or, you can check the “Manage add-ons” by clicking the setting icon of IE.



Please make sure the WebAutoLoginBHO program has been activated.

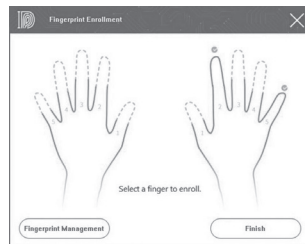


How to enroll your fingerprint

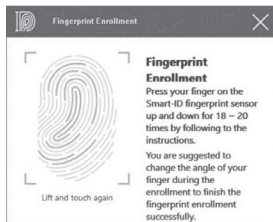
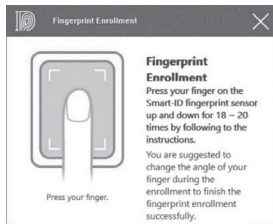
Click the “Fingerprint Maintenance” function on the main panel.



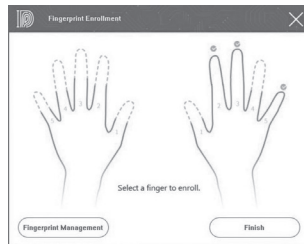
Choose which finger you will enroll. For example, the middle finger.



Follow the instruction on the screen.



After finishing, the finger you enrolled will be check.

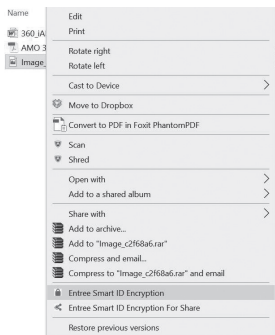


You can check the list of the fingerprint database by clicking the "Fingerprint Management" function on the Fingerprint Enrollment window.

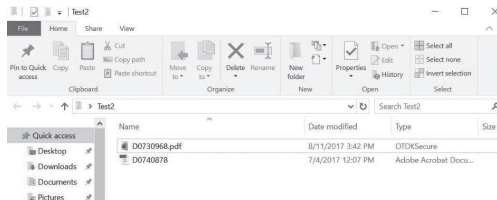


File/files encryption/decryption.

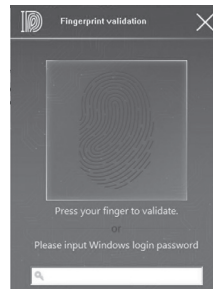
You can select file/files to encrypt. After selecting the file/files, click the right button of the mouse and select the “Smart ID Encryption” feature.



The file/files will be encrypted as the following.



If you want decrypt the encrypted file, just double click it. The fingerprint validation window will pop up. The validation can be done by fingerprint or Windows login password.

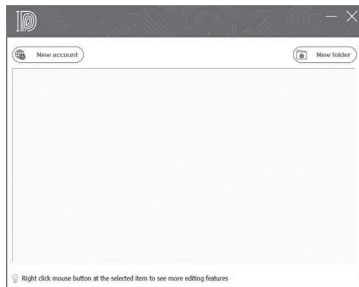


Password Manager

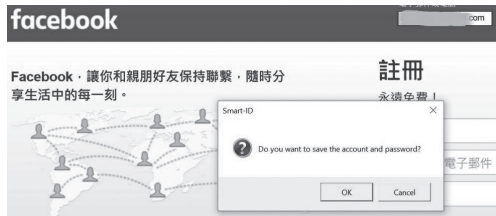
Select the “Password Manager” feature on the main panel.



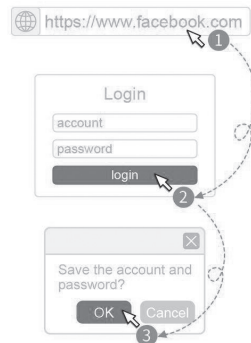
The following the management panel will pop up. You can click the “New account” button to add the web site/social media account.



The following IE browser/Chrome will pop up. You can login the web site you would like to add. For example, Facebook. Once you finished the account and password information and click “login” button, a dialog window will pop up.



You could add more web accounts by following the below procedure.



Then, you can check the web site management window, the Facebook will be added.

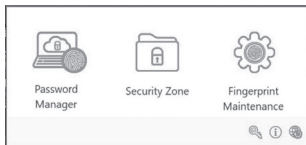


You can do “Login”, “Edit”, or “Delete” by clicking the right button of your mouse on the list.

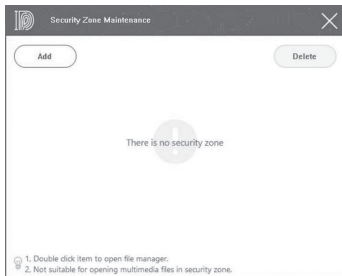


Security Zone

You can specify a folder as the security zone. Once a file was copied into the folder or created in the folder, it will be encrypted automatically. You could drag and drop a file/folder into the “Security Zone” icon directly. Even, you can open a file by double clicking the file. After editing and saving the file opened, it will be encrypted automatically. Select “Security Zone” feature on the main panel.



The following folder-specify window will pop up.

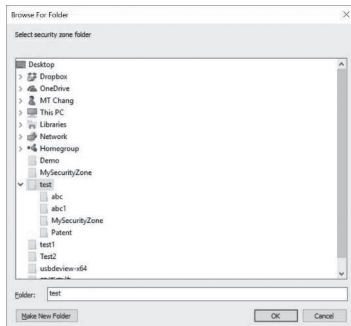


You could click the “Add” icon and the zone specify windows will pop up.

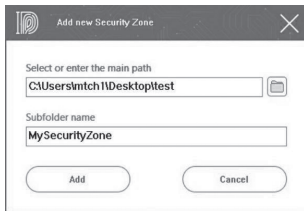


Click the right button in the path specify area. The following path specifies window will pop up.

Then, you can select the path of the security folder.

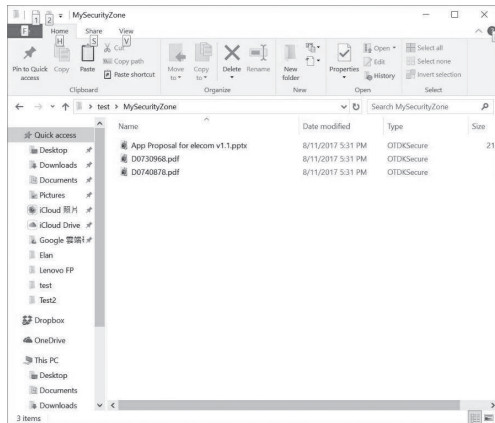


Then, specify the Security Zone folder name in the Subfolder name.



You might leave the Subfolder name area empty.

All the files in the security folder will be encrypted automatically.



Due to continuous development specification and appearance of product are subject to change without prior notice. For technical support please visit www.media-tech.eu.